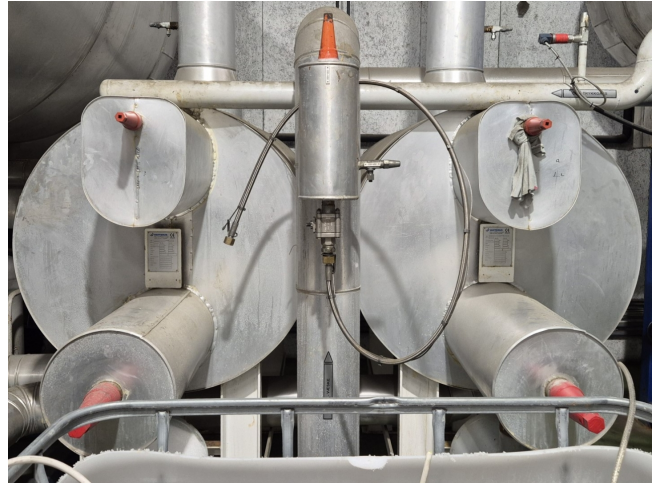


Vahterus PSHE 7HH-372/1/1

Specifications

Marka	Vahterus
Rodzaj	PSHE 7HH-372/1/1
Typ produktu	Q plate
Refrigerant / Medium	CO2/Ammonia (NH3)
Ogólna wydajność w kW	750
Size	2500x1300x2350 mm (LxWxH)
Volume	204,4 L / 268,9 L
Remarks	Y.o.b. 2017
Stock	2



Description

Used Vahterus PSHE 7HH-372/1/1

Used Vahterus PSHE 7HH-372/1/1 Q-Plate with a volume of 204,4 l (CO2) / 268,9 l (NH3) complete with a Witt HS 42-L/N float on CO2 with a volume of 38 liters. Weight (empty) 2790 kg.

